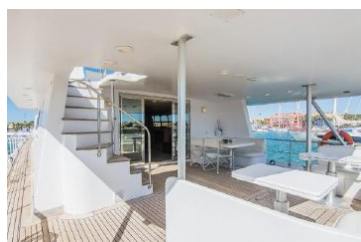


33 m 1976 Admiral 100

€650,000 Tax: N/A

Sotogrande, Spain



## Boat Details

Make:	<b>Admiral</b>	Class:	<b>Motor Yacht</b>	Heads:	<b>5</b>
Model:	<b>100</b>	Hull Material:	<b>Wood</b>	Fuel Type:	<b>Diesel</b>
Year:	<b>1976</b>	Drive Type:	<b>Shaft Drive</b>	Max Speed:	<b>26 kn</b>
Length:	<b>33 m</b>	Beam:	<b>7 m 52 cm</b>	Max Draft:	<b>1 m 80 cm</b>
Price:	<b>€650,000</b>	Boat Location:	<b>Sotogrande, Spain</b>		
Condition:	<b>Used</b>	Berths:	<b>8</b>		



**Francis Holbourne | Banus Yachts SL**

Muelle Benabola, Casa D, Portal 2, No. 101, Malaga, Spain

Tel: **+34 609503382**

[fjh@banusyachts.com](mailto:fjh@banusyachts.com)

[www.banusyachts.com](http://www.banusyachts.com)

## Description

Admiral 100. This all-wood construction fast cruising Italian motor yacht is fitted with triple MTU V12 1600 hp diesels. Her layout comprises of four double ensuite guest cabins, extremely spacious saloon and dining area, wheel house and deck spaces. She has three double ensuite crew cabins. Full refit 2014.

## Information & Features

### 1997 MTU V12 (Engine 1)

Type: **Inboard** Power: **1600 hp**  
Fuel Type: **Diesel**  
Drive Type: **Shaft Drive**

### 1997 MTU V12 (Engine 2)

Type: **Inboard** Power: **1600 hp**  
Fuel Type: **Diesel**  
Drive Type: **Shaft Drive**

### 1997 MTU V12 (Engine 3)

Type: **Inboard** Power: **1600 hp**  
Fuel Type: **Diesel**  
Drive Type: **Shaft Drive**

## Dimensions

LOA: **29 m 86 cm**  
Beam: **7 m 52 cm**  
Max Draft: **1 m 80 cm**

## Speed

Cruising Speed: **20 kn**  
Max Speed: **26 kn**  
Range: **1300 nmi**

## Tanks

Fuel: **1 x 15,000 l**

## Accommodations

Double Berths: **4**  
Heads: **5**

## Other

Hull Shape: **Deep Vee**

## Covers

- Bimini Top

## Electrical Equipment

- Shore Power Inlet  
- Generator

## Electronics

- Depthsounder
- Radar
- Log-Speedometer
- Wind Speed and Direction
- Repeater(s)
- TV Set
- Navigation Center
- Plotter
- DVD Player
- Autopilot
- Radio
- Compass
- CD Player
- GPS
- Cockpit Speakers
- VHF

## Inside Equipment

- Dishwasher
- Bow Thruster
- Washing Machine
- Electric Bilge Pump
- Oven
- Manual Bilge Pump
- Microwave Oven
- Air Compressor
- Marine Head
- Air Conditioning
- Heating
- Hot Water
- Refrigerator
- Fresh Water Maker
- Deep Freezer
- Battery Charger

## Outside Equipment/Extras

- Teak Cockpit
- Cockpit Shower
- Teak Sidedecks
- Gangway
- Davit(s)
- Tender
- Liferaft
- Cockpit Cushions
- Cockpit Table
- Swimming Ladder

## Disclaimer

The Company offers the details of this vessel in good faith but cannot guarantee or warrant the accuracy of this information nor warrant the condition of the vessel. A buyer should instruct his agents, or his surveyors, to investigate such details as the buyer desires validated. This vessel is offered subject to prior sale, price change, or withdrawal without notice.





